

Terminator™ ZL

Lighted Power Connection/ End Termination Kit

INSTALLATION PROCEDURES

For Power Connection or End Termination Applications



The Heat Tracing Specialists®

Terminator™ ZL

INSTALLATION PROCEDURES

Kit Contents . . .

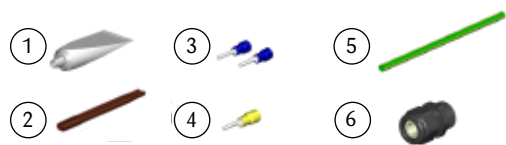


Item	Quantity	Description
1	1	Expediter Assembly Support Cap with O-Ring Threaded Grommet Compressor Grommet Support Base with O-Ring
2	1	Junction Box Lid
3	1	Junction Box Base with O-Ring
4	1	Nut
5	1	Banding
6	1	Banding Guide
7	1	Terminal Blocks with DIN Rail (Refer to terminal specifications for maximum allowable wire size)
8	1	Junction Box Cord
9	2	Blind Plugs

Order Separately . . .

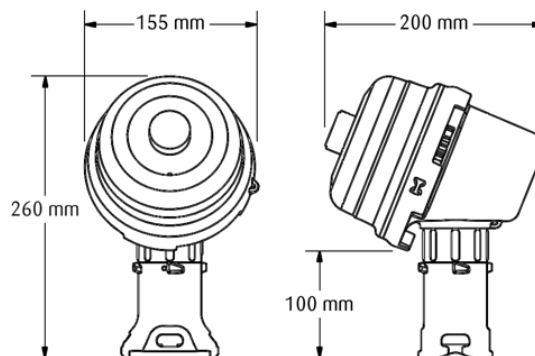
PETK Power and End Termination Kits (per cable)

- PETK-1 for RSX, TSX, VSX, BSX
 PETK-2 for BSX, KSX, HTSX
 PETK-3 for HPT, FP

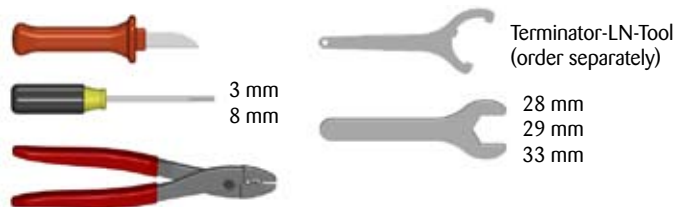


Item	Quantity	Description
1	1	RTV Tube (per cable)
2	1	Power Connection Boot
3	2	Conductor Wire Pins (per cable)
4	1	Brad Wire Pin (per cable)
5	1	Ground Sleeve (per cable)
6	1	Power Gland (Optional see Step 10)

Dimensions . . .



Tools Required . . .



Certifications/Approvals . . .

IP66 -60°C ≤ Ta ≤ +55°C
 Ordinary & Hazardous Locations

IECEx FMG 10.0022X Ex eb IIC T4-T6, Ex tb IIIC T135°C-T85°C

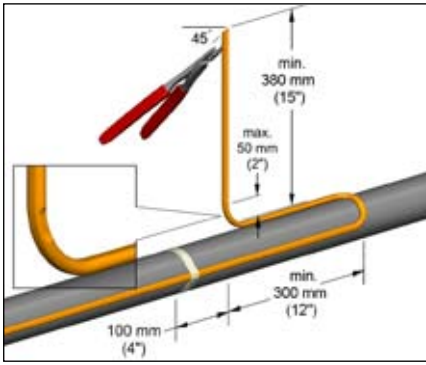
CE 1725 Ex II 2 GD Ex eb IIC T4-T6, Ex tb IIIC T135°C-T85°C FM 10ATEX0058X

Warnings . . .

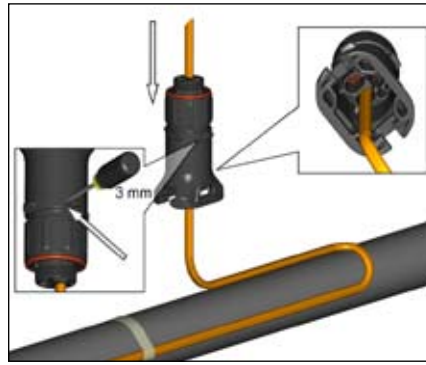
- Due to the risk of electrical shock, arcing and fire caused by product damage or improper usage, installation or maintenance, a ground-fault protection device is required.
- Installation must comply with Thermon requirements (including form PN 50207U for Ex systems) and be installed in accordance with the regulations as per the norm EN IEC 60079-14 for hazardous areas (where applicable), or any other applicable national and local codes.
- Component approvals and performance ratings are based on the use of Thermon specified parts only.
- De-energize all power sources before opening enclosure.
- Keep ends of heating cable and kit components dry before and during installation.
- Minimum bending radius of heating cable is 32 mm (except HPT is 57 mm and FP is 19 mm).



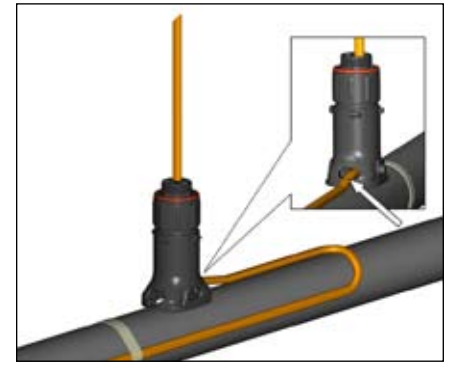
The Heat Tracing Specialists®



1. Locate bus connection (HPT and FP only) and cable as shown. Cut end of cable at angle to aid in piercing grommet. Leave additional cable for expansion loop. See page 4 for multiple cable installation tips.



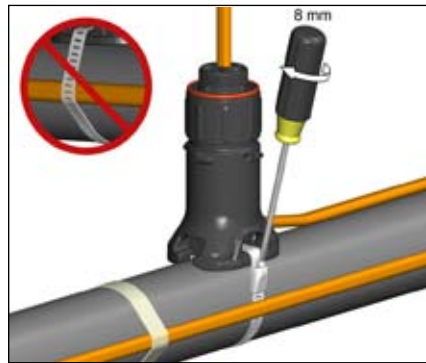
2. Insert cable into expediter. If mounted on bottom or side of pipe, punch out weep hole.



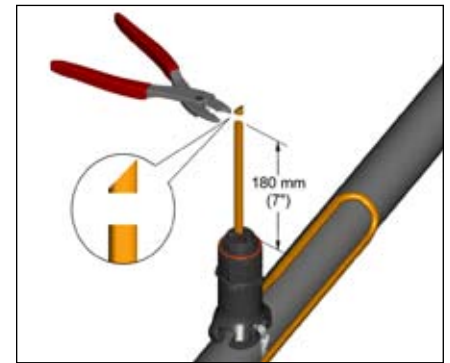
3. Slide expediter toward pipe and route cable through support base entry.



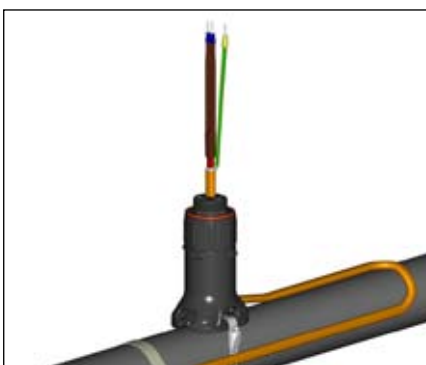
4. Insert banding guide into expediter and snap into place..



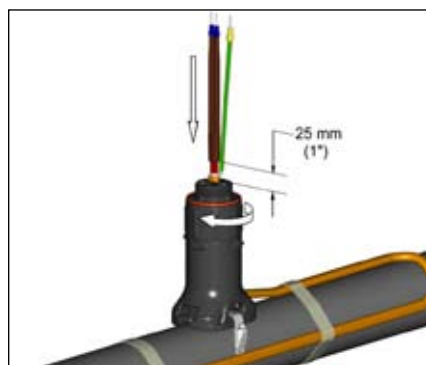
5. Mount expediter to pipe using pipe band. Do not band over cable.



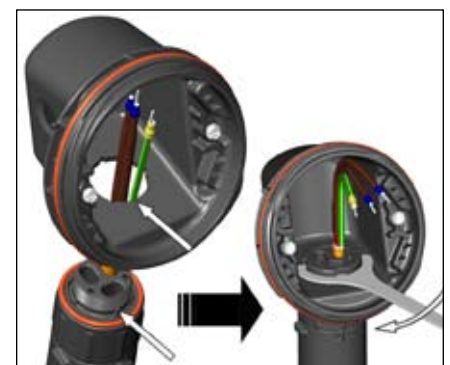
6. Cut off end of cable..



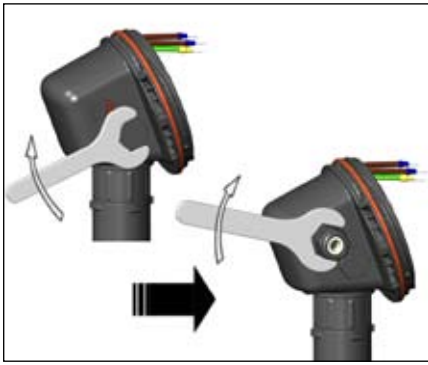
7. Terminate cable with appropriate PETK termination kit. Refer to PETK installation instructions.



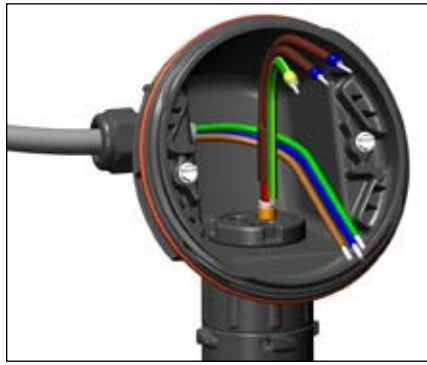
8. Push excess cable back through expediter. Tighten cap securely. Tape cable expansion loop to pipe.



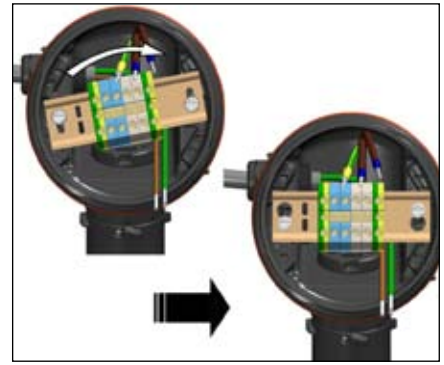
9. Mount junction box base on expediter. Make sure to align slots to properly orient junction box base. Tighten nut with Terminator-LN-Tool. If mounting horizontally, threaded gland holes must face downward.



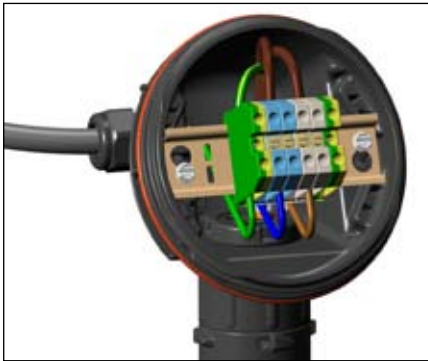
10. Install M25 power gland and M25 blind plug. For in-line splice, T-splice, or end termination, install additional M25 blind plug (order M25-B-EXE separately) instead of M25 power gland.



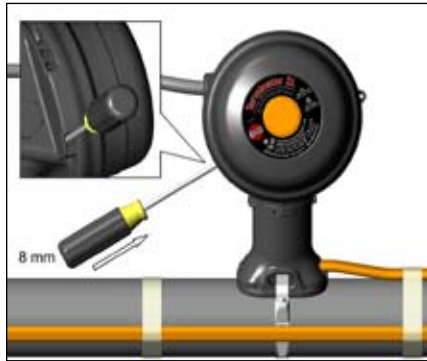
11. Install M25 power gland and M25 blind plug. For in-line splice, T-splice, or end termination, install additional M25 blind plug (order M25-B-EXE separately) instead of M25 power gland.



12. Install quick mount terminal blocks and tighten screws (if necessary).



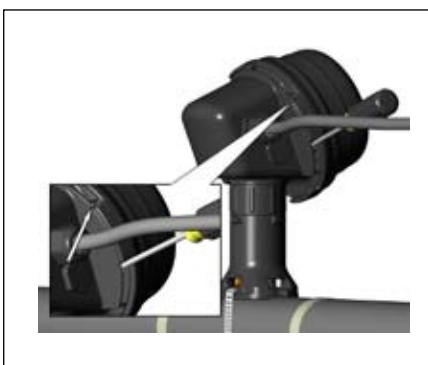
13. Complete system wiring. Terminal set screws shall be tightened to a torque value of 1.4 Nm (12.4 lb-in). See page 5 for wiring details.



14. Install junction box lid and twist hand tight. Insert screwdriver into ratchet slots located on side of junction box base.

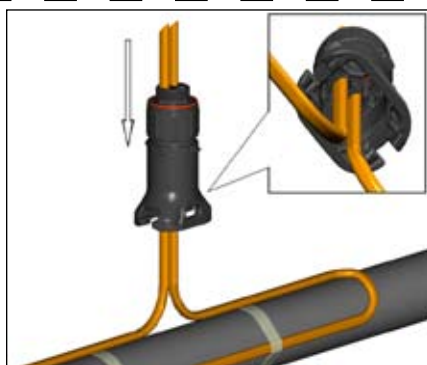


15. Use screwdriver to ratchet on junction box lid. Lid will rotate 30 degrees.

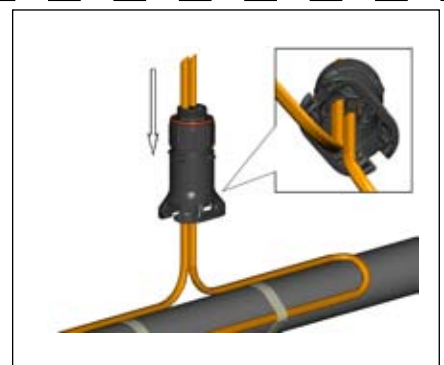


16. Lid latch mechanism fully engaged. To remove lid, repeat steps 14 and 15 but in the opposite direction..

Two Cable Layout Tips

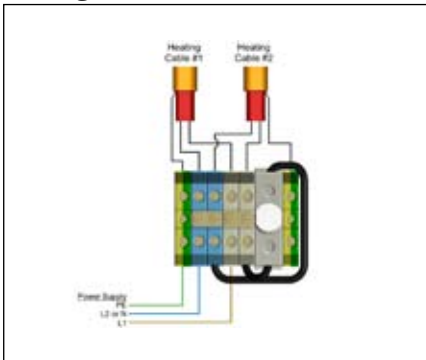


A1. Locate bus connection (HPT and FP only) and cable as shown. Cut end of cable at angle to aid in piercing grommet. Leave additional cable for expansion loop.

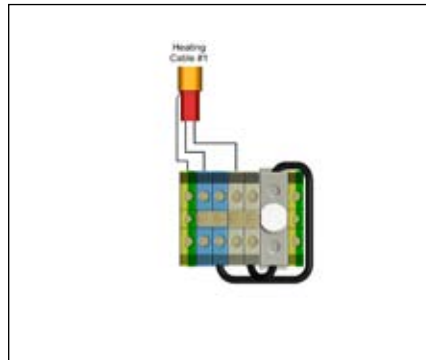


A2. Insert two cables into expediter.

Wiring Details



B1. Power Connection (1 to 2 Heating Cables)



B2. End Termination (1 Heating Cable Only)



THERMON . . . The Heat Tracing Specialists®
www.thermon.com

ISO 9001
REGISTERED

tce Thermal Controls
and Electronics

TC-E B.V.
Nieuwland Parc 314c
2952 DD Alblasterdam
The Netherlands

+31 (0) 183 20 10 88
sales@tc-e.nl
www.tc-e.nl - www.heattrace.eu
Authorized Thermon distributor